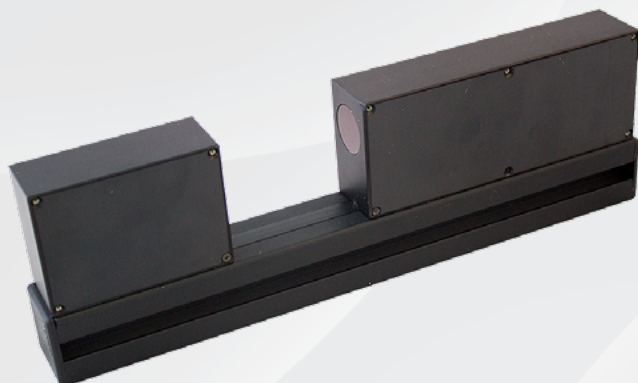
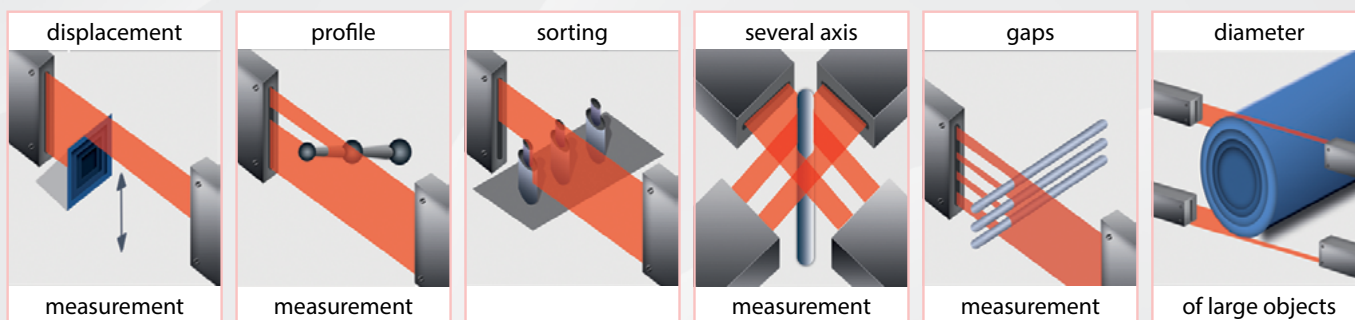


Diameter, gaps and position measurement



- Direct through beam micrometers
- Micrometers with telecentric lens
- Measuring ranges 5, 10, 25 mm
- Sampling rate up to 10000 Hz
- RS232/RS485/Ethernet +4...20 mA/0...10V
- Multi coordinate systems



BASIC TECHNICAL DATA

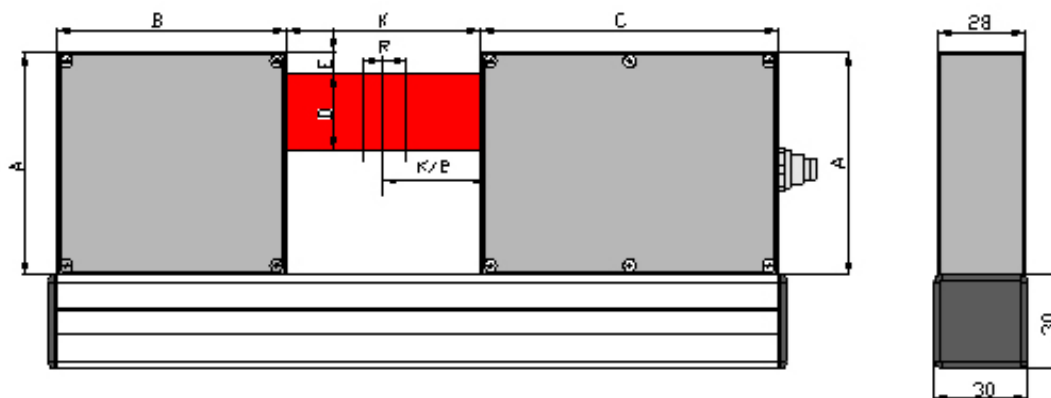
RF656-		5	10	25
Measurement range, mm		±1x5	±3x10	±5x25
Minimum size of the object, mm		0.03	0,05	0,1
Transmitter-Receiver distance		25	56	63
Accuracy¹, um		±0,3	±0,5	±1
Max measurement frequency, Hz		2000	10000	10000
Light source		LED		
Lase safety class		1 (IEC60825-1)		
Output interface	digital	RS232 (max. 921,6 kbit/s) or RS485 (max. 921,6 kbit/s) or Ethernet & (RS32 or RS485)		
	analog	4...20 mA (load £ 500 Ohm) or 0...10 V		
Synchronization input		2,4 - 5 V (CMOS, TTL)		
Logic output		three outputs, NPN: 100 mA max; 40 V max		
Power supply, V		24 (9 ...36)		
Power consumption, W		1,5..2		
Environment resistance	Enclosure rating	IP67		
	Vibration	20g/10...1000Hz, 6 hours, for each of XYZ axes		
	Shock	30 g / 6 ms		
	Operation temperature, °C	-10...+60		
Relative humidity		5-95% (no condensation)		
Housing material		aluminum		
Weight (without cable), gram		600	600	600

1 Typical data obtained when a knife edge was used to interrupt the beam and distance between transmitter and receiver is equal of two measurement range



OVERALL DIMENSIONS. RF656

	A, mm	B, mm	C, mm	D, mm	E, mm	K, mm	R, mm
RF656-5	66	50	158	5	14	28	2
RF656-10	50	70	126	10	11,5	56	6
RF656-25	72	74	96	25	7	63	10

**EXAMPLE OF DESIGNATION WHEN ORDERING****RF656-X-SERIAL-ANALOG- LOUT- IN-CC-M-AK**

Symbol	Description
X	Measurement range, mm
SERIAL	The type of serial interface: RS232 - 232 or RS485 - 485 or (Ethernet and RS232) – 232-ET or (Ethernet and RS485) – 485-ET
ANALOG	Attribute showing the presence of 4...20 mA (I) or 0...10V (U)
LOUT	Attribute showing the presence of 3 logical outputs
IN	Trigger input (input of synchronization) presence
CC	Cable gland - CG, or cable connector - CC
M	Cable length, m
AK	Micrometer with protect air knife for windows
Example. RF656-25-232-I-IN-CG-3 – measurement range – 25 mm, RS232 serial port, 4...20mA analog output, trigger input is available, cable connector, 3 m cable length.	