



RIFTEK
Sensors & Instruments



3D LASER SORTING MACHINE

RF1010SS Series

User's manual

22, Logoisky tract, Minsk
220090, Republic of Belarus
tel/fax: +375 17 281 35 13
info@riftek.com
www.riftek.com

Contents

1.	Safety precautions.....	3
2.	Electromagnetic compatibility	3
3.	Laser safety.....	3
4.	General information	4
5.	Structure and operating principle	4
6.	Basic technical data.....	5
7.	Dimensions	5
8.	Preparation for work	6
8.1.	Necessary conditions.....	6
9.	Operating the machine	7
9.1.	Working window of the program.....	7
9.2.	Measurement procedure.....	8
9.3.	Logging the results	8
9.4.	Calibration	9
9.5.	Indicating lights.....	9
10.	Maintenance.....	9
10.1.	General instructions.....	9
10.2.	Maintenance procedure	9
10.2.1.	Daily maintenance work	9
10.2.2.	Weekly maintenance work	9
10.2.3.	Yearly maintenance work.....	9
11.	Routine repairs.....	9
12.	Warranty policy.....	10
13.	Distributors	10

1. Safety precautions

- Use supply voltage and interfaces indicated in the machine specifications.
- In connection/disconnection of cables, the machine power must be switched off.
- Do not use machine in locations close to powerful light sources.
- To obtain stable results, wait about 20 minutes after machine activation to achieve uniform scanner warm-up.
- Avoid metal chips getting into the machine body;
- Do not allow foreign objects to get between moving and stationary parts of the measuring machine after turning it on;
- Do not obstruct the movement of moving parts of the machine;
- Friction parts of the ball screw assembly should be kept clean and be lubricated;
- The machine should be grounded and connected to ground line via a separate lateral line;
- It is not recommended to connect other devices and networks to the host computer.

2. Electromagnetic compatibility

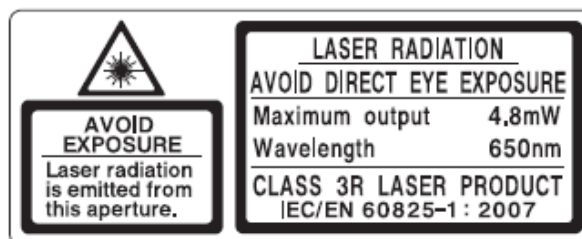
The machine have been developed for use in industry and meet the requirements of the following standards:

- EN 55022:2006 Information Technology Equipment. Radio disturbance characteristics. Limits and methods of measurement.
- EN 61000-6-2:2005 Electromagnetic compatibility (EMC). Generic standards. Immunity for industrial environments.
- EN 61326-1:2006 Electrical Equipment for Measurement, Control, and Laboratory Use. EMC Requirements. General requirements.

3. Laser safety

The machine makes use of laser scanner. Laser scanner belongs to the 3R laser safety class according to IEC 60825-1:2007.

The scanner makes use of an c.w. 660 nm wavelength semiconductor laser. Maximum output power is 5 mW. The following warning label is placed on the laser body:



The following safety measures should be taken while operating the scanners:

- Do not target laser beam to humans;
- Avoid staring into the laser beam through optical instruments;
- Use protective goggles when operating the sensor;
- Avoid staring into the laser beam;
- Do not disassemble the sensor.

4. General information

The measuring machine is designed for non-contact measurement of geometrical parameters of objects, specifically sunflower seeds, and is a standalone software/hardware system.

Technical characteristics of the machine can be changed for a specific task.

5. Structure and operating principle

The work of the machine is based on the principle of 3D laser scanning of object/objects with subsequent construction of a 3D computer model and determination of geometrical parameters from the model.

The machine structural design is illustrated in Figure 1.

The machine consists of a table 1 whereon a frame structure 2 is located with a guide 3. Installed on the guide 3 there is a carriage 4 with a laser scanner 5. The carriage 4 is driven by a stepper motor 6 by means of a ball screws assembly (not shown). In the extreme positions of the carriage 4 there are limit switches (not shown). An indicating unit 7 is mounted on the frame structure 2. On the side plate of the machine there is a power connector 8 (220V) and two network jacks 9 for Ethernet connection. Connection of the machine to PC 10 is via the network switch 11.

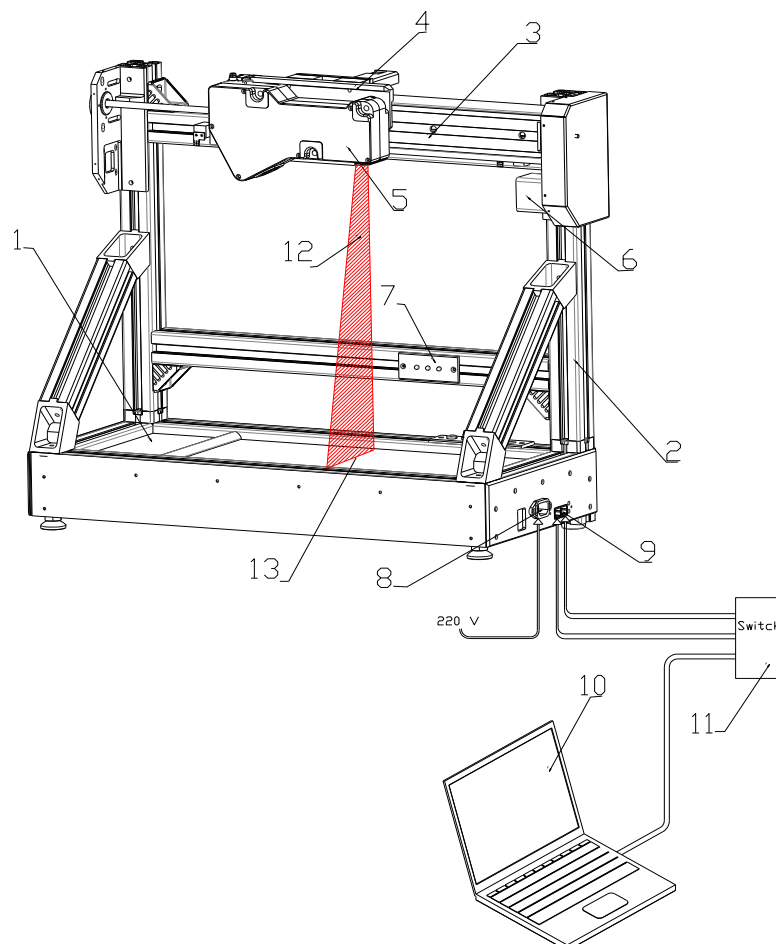


Figure 1

Laser radiation 12 of a scanner 5 is formed into a line 13 and is projected onto the table 1 where objects to be controlled are located. The laser line length corresponds to the table width. The resulting images of the contour (section profile) of the objects located on the table are analyzed by the scanner signal processor which calculates the

distance to the object (Z coordinate of points) for each of a plurality of points along the laser line on the object (X coordinate of points).

The machine works as follows.

The laser scanner mounted on the carriage moves along the table 1, the direction of the movement being the coordinate Y. The laser scanner determines the coordinates of the object profile points (X, Z) at fixed regular linear intervals along the Y coordinate defined by the stepper motor drive. As a result, a 3D computer model of the scanned area is obtained in the form of a cloud of points with known coordinates (X, Y, Z). An example of the model is shown in Fig. 3. The required geometrical parameters of the object are calculated from the resulting 3D model.

5



Figure 1

6. Basic technical data

Parameter	Value
Scanning range Y-axis, mm	400
Scanning range, Z-axis, mm	300
Scanning range X (start of measurement, Z-axis), mm	130
Scanning range X (end of measurement Z-axis), mm	240
Measurement accuracy, X,Z axes, μm	± 150
Measurement accuracy, Y axis, μm	± 20
Sampling rate, profiles/s	250
Speed, mm/s	25
Parameters under control	length, width, height
Dimension, mm	730x415x180
Weight, kg	40
Power supply	alternating-current mains with sampling rate (50 ± 1) Hz, nominal power 220 with allowable stress $\pm 10\%$.
Power consumption, W	50
Environment conditions	Environment temperature: $+1..+35^{\circ}\text{C}$ Relative humidity 25-65%

7. Dimensions

The dimensions of the machine are shown in the picture 3.

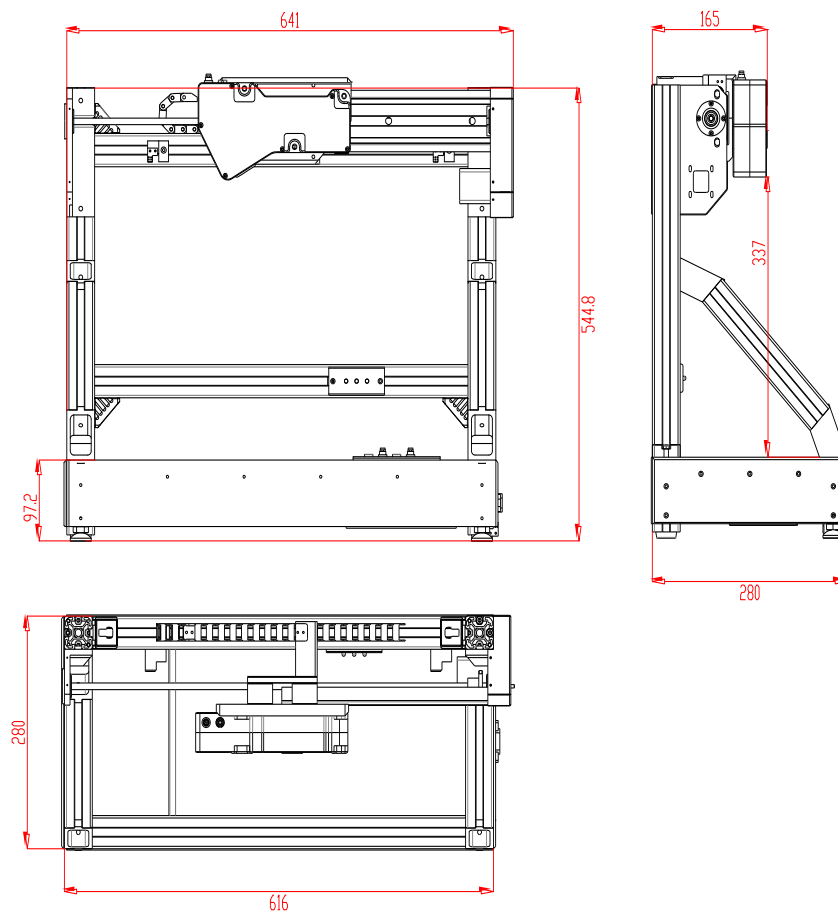


Figure 3

8. Preparation for work

- Connect the machine according to Fig. 1.
- Install Qt version 4.8.0 libraries, Microsoft redistributable package 2010. The library set up program **vc redistrib.exe** is on CD which is part of the supply package. The software is adapted to the OS Windows XP, Vista, 7 environments.
- Perform network settings. Ethernet network address space is 192.168.1.X, mask word is 255.255.255.0. IP address of the PC should be in the space specified, X must not be equal to 10 (display unit address) and 15 (laser scanner address).
- It is not recommended to connect other network devices and networks to the host computer.
- Calibrate the machine in accordance with par. 9.4.

8.1. Necessary conditions

Necessary conditions to ensure correct operation of the machine are as follows:

- seeds should not be in touch with each other so that the size of the gap must be such that when the laser beam falls between the seeds the scanning area should be lit by the beam.
- seeds should not touch restrictive skirting around the table perimeter.

9. Operating the machine

The geometric parameters measurement cycle is fully automated and operation of the machine is reduced to the work with the program

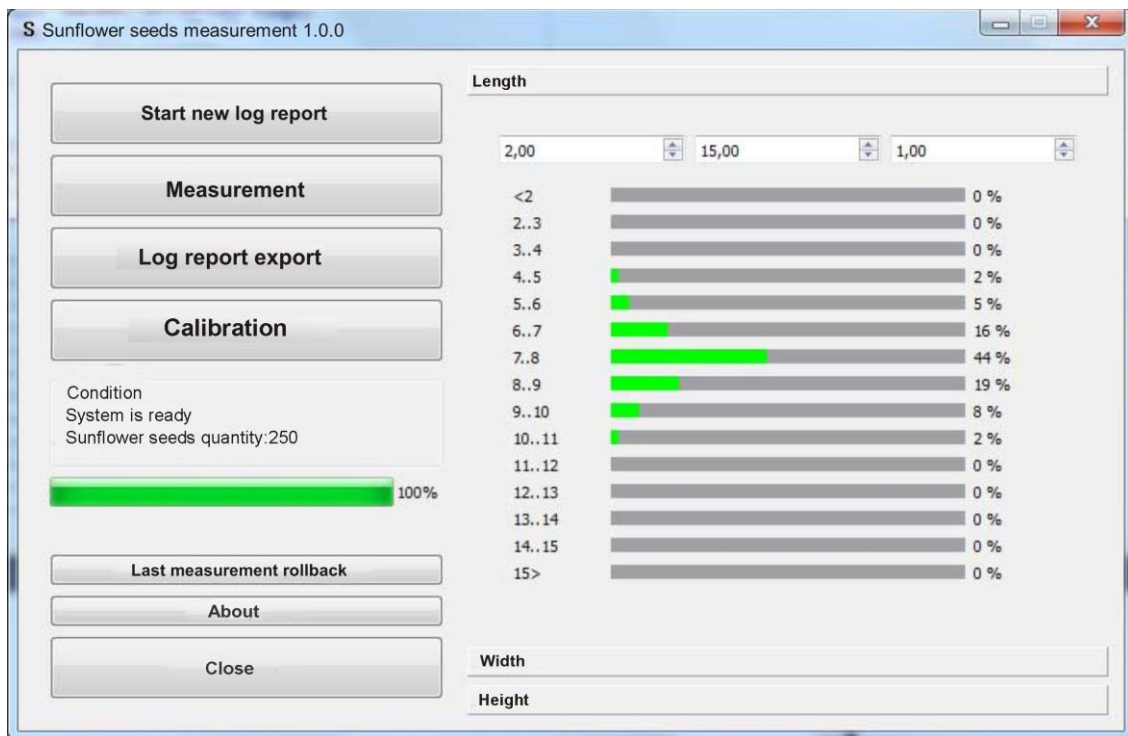
The program ensures:

- control of the machine in the operation process and debugging modes,
- receiving data from the scanner and construction of a 3D model
- mathematical calculations
- input of sorting parameters
- logging of the results
- control of the machine status
- control of LED indications
- calibration of the machine

7

9.1. Working window of the program

Run the RFSeeds program. When run, the program automatically scans the network devices and connects to them. If the connection is successful the status line displays "System Ready", and the working window emerges which is shown in Fig. 4. Otherwise, description of the connection error emerges.



Picture 4

Control keys are located in the left part of the window. Key functions are as follows:

Start new log report – deletion of all accumulated data;

Measurement – start measurement procedure;

Log report export – formation of log report with measurement results;

Calibration – start calibration procedure;

Last measurement rollback – deletion of the last measurement out of data array.

The right part of the window contains:

three tabs – **Length**, **Width**, **Height**, and the field boxes common for the tabs:
 the box for displaying the histogram of the distribution of seeds in size,
 the box for setting the group interval as well as the upper and lower limits of the size range in histogramming.

9.2. Measurement procedure

- Check (form) the parameters of the histogram.
- Place the seeds on the table in accordance with the requirements of par. 8.1.
- Click the **Measurement** key. Scanning session will start. If the scanner is not located at the beginning of the range, it will first be moved to the starting position and then scanning will start. The slider in the center of the program window will display dynamics of the scanning process.
- When the scanning is finished, the program will display the number of scanned seeds and their size distribution.
- The result of each subsequent scanning is added to the previous results. To delete the accumulated data before scanning, click **Start new log report** key.
- If incorrect or incomplete scanning has been obtained, the results can be removed from the accumulated data using the **Last measurement rollback** key.

9.3. Logging the results

To obtain log report, click the **Log report export** key. An example of the report is shown below.

22.12.2012 16:15:55.330

Total amount of sunflower seeds

Length

...4	1	0.813008 %
4..5	0	0 %
5..6	1	0.81 %
6..7	0	0 %
7..8	0	0 %
8..9	0	0 %
9..10	1	0.81 %
10..11	5	4.06 %
11..12	15	12.19 %
12..13	29	23.57 %
13..14	26	21.13 %
14..15	6	4.87 %
15..16	4	3.25 %
16..17	2	1.62 %
17..18	1	0.81 %
18..19	8	6.50 %
19..20	7	5.69 %
20..21	5	4.06 %

: 123

Width

...2	0	0 %
2..3	0	0 %
3..4	2	1.62 %
4..5	3	2.43 %
5..6	13	10.56 %
6..7	38	30.89 %
7..8	47	38.21 %
8..9	12	9.75 %
9..10	6	4.87 %
10..11	1	0.81 %
11..12	0	0 %
12..13	0	0 %
13..14	0	0 %
14..15	0	0 %
15...	1	0.81 %

Height

...1	0	0 %
1..2	0	0 %
2..3	2	1.62 %
3..4	24	19.51 %
4..5	66	53.65 %
5..6	28	22.76 %
6..7	2	1.62 %
7..8	1	0.81 %
8..9	0	0 %
9..10	0	0 %
10..11	0	0 %
11..12	0	0 %
12..13	0	0 %
13..14	0	0 %
14...	0	0 %

9.4. Calibration

For the first start of the machine and once a month it is recommended to calibrate the machine. To do this, remove all items from the working surface of the machine table and click **Calibration**. When the system status changes (e.g., because of transportation, reassembly), calibration must be carried in a mandatory manner.

9.5. Indicating lights

The indicating lights (see. Fig. 1) show the current status of the machine.

- Red LED is lit – failure;
- Blue LED is lit – machine is ready for operation
- Yellow LED is lit – scanning is in process

10. Maintenance

10.1. General instructions

Maintenance of the machine is carried out to ensure constant-ready status and continued availability of its work and to prevent premature failure.

10.2. Maintenance procedure

10.2.1. Daily maintenance work

Daily maintenance includes:

- Visual inspection of the machine,
- Checking of completeness,
- Inspection of the units and elements that make up the machine,
- Checking for any damage of the structural elements, power and instrument cables, indicators and connectors,
- weakening of screw connections and insulation failures,
- Before starting work, it is necessary to wipe the input and output laser scanner windows with a soft dry cloth.

10.2.2. Weekly maintenance work

Weekly maintenance includes:

- cleaning of laser scanner windows with a dry soft lint-free cloth from contamination or dirt;
- checking of free movement of the carriage

10.2.3. Yearly maintenance work

Authenticated calibration of the laser scanner should be made once a year

11. Routine repairs

Trouble-shooting instructions are given in the following table.

Trouble	Possible cause	Corrective actions
Incorrect measurements	Effects of extraneous illumination source	Remove extraneous illumination source or protect the machine against its effects
	Dirty laser scanner windows	Clean scanner windows
	Software malfunction	Reload the computer
	Seeds are in touch with each other	Fulfill condition in par. 8.1.

	Scanner displacement	Calibrate the machine
Scanner is out of the scanning range	Return scanner to the scanning range with the help of TestSignalBlock.exe program (included in delivery set)	
The program fails to connect with the scanner	Perform diagnostics of the scanner with the help of rf620et-sp.exe program and using description of the scanner. When adjusting the system the DHCP server may be necessary, it is included with the software (tftpd32) in the delivery set.	
Connection to the machine fails	Check network connections, run the TestSignalBlock.exe program with RFSeeds out of line. If LEDs are not controlled by clicking checkboxes in this program, it means that the indicating unit is out of order. If LEDs are controlled but there is no connection to motor (all motor setting field values = 0), it means that the motor drive is out of order.	
	Check Ethernet connection, the work of the network IC card (100 Mb/s connection should be used), firewall and antivirus program settings. The network should also allow broadcast access.	

10

12. Warranty policy

Warranty assurance for the 3D Laser measurement machine RF1010SS - 24 months from the date of putting in operation; warranty shelf-life - 12 months.

13. Distributors

<p>AUSTRALIA</p> <p>XN Innovation LG Centre, Suite 1, Level M, 55 Par- ramatta Rd, NSW, 2141, Lidcombe, Australia Tel: +61 (0)2 8091 2426 Fax: +61 (0)2 9648 6597 xni.sales@gmail.com</p>	<p>BENELUX</p> <p>Altheris B.V. Scheveningseweg 15 2517 KS The Hague, The Netherlands Tel: +31 (70) 3924421 Fax: +31 (70) 3644249 sales@altheris.nl www.altheris.com</p>	<p>BULGARIA, HUNGARY</p> <p>RMT Ltd. R Zahradni 224 739 21 Paskov, Czech Republic Tel: +420 558640211 Fax: +420 558640218 rmt@rmt.cz lubomir.kolar@rmt.cz www.rmt.cz</p>
<p>CHINA</p> <p>Zhenshangyou Technologies Co.,Ltd. Rm 1806, Block B, Jinhaian Building Chuangye Road, Nanshan District Shenzhen, 518054, China Tel: 86)755-26528100/8011/8012 Fax: (86)755-26528210/26435640 info@51sensors.com www.51sensors.com</p>	<p>CZECH REPUBLIC</p> <p>RMT Ltd. Zahradni 224 739 21 Paskov, Czech Republic Tel: +420 558640211 Fax: +420 558640218 rmt@rmt.cz lubomir.kolar@rmt.cz www.rmt.cz</p>	<p>GERMANY</p> <p>Disynet GmbH Westwall 12 D-41379 Brueggen, Germany Tel: +49 (2157) 8799-0 Fax: +49 (2157) 8799-22 disynet@sensoren.de www.sensoren.de</p>
<p>GERMANY</p> <p>BIP-Industrietechnik GmbH RAILWAY INSTRUMENTS ONLY Am Elisabethhof 22, D-14772 Brandenburg D-41379 Brueggen, Germany Tel: +49 (0) 33 81 75 90 0 Fax: +49 (0) 33 81 75 90 11 info@bip-industrie.de www.bip-industrietechnik.de</p>	<p>INDIA</p> <p>Pragathi Solutions #698, 5th Main, 8th Cross, HAL 3rd Stage, New Tippasandra Road, Bangalore, 560075, India Tel: +91 80 32973388 Tel/fax: +91 80 25293985 Mobile: +91 9448030426/ +919448492380 sales@pragathisolutions.in arghya@pragathisolutions.in www.pragathisolutions.in</p>	<p>INDONESIA</p> <p>PT. DHAYA BASWARA SANIYASA Sentra Niaga Puri Indah Blok T6 No. 41 Kembangan Jakarta, 11610, Indonesia Tel: 021 5830 4517 Fax: 021 5830 4518 management@ptdbs.co.id</p>

<p>ITALY</p> <p>FAE s.r.l. Via Tertulliano, 41 20137 Milano, Italy Tel: +39-02-55187133 Fax: +39-02-55187399 fae@fae.it www.fae.it</p>	<p>FINLAND</p> <p>TERÄSPYÖRÄ-STEELWHEEL OY RAILWAY INSTRUMENTS ONLY Juvan teollisuuskatu 28 FI-02920 ESPOO, Finland Tel: +358 400 422 900 Fax: +358 9 2511 5510 steelwheel@steelwheel.fi www.teraspyora.fi</p>	<p>LITHUANIA</p> <p>JSC "Comexim" Serbentu, 222, LT-5419 Siauliai, Lithuania Tel/Fax:+370 41553487 comexim@siauliai.aiva.lt www.komeksimas.lt</p>
<p>MALAYSIA</p> <p>OptoCom Euiptech (M) Sdn Bhd H-49-2, Jalan 5, Cosmoplex Industrial Park. Bandar Baru Salak Tinggi, Sepang, Malaysia Tel: 603 8706 6806 Fax: 603 8706 6809 optocom@tm.net.my www.optocom.com.my</p>	<p>POLAND</p> <p>P.U.T. GRAW Sp. z o.o. ul. Karola Miarki 12, skr.6. 44-100 Gliwice, Poland Tel/fax: +48 (32) 231 70 91 info@graw.com www.graw.com</p>	<p>POLAND</p> <p>MTL ASCO Sp. z o.o. RAILWAY INSTRUMENTS ONLY ul. Wielowiejska 53 44-120 PYSKOWICE (k/ GLIWIC), Poland Tel: +48 32 233 33 33 Fax: +48 32 233 21 34 serwis@mtlasco.pl www.ascorail.pl</p>
<p>POLAND</p> <p>RMT Ltd. Zahradni 224 739 21 Paskov, Czech Republic Tel: +420 558640211 Fax: +420 558640218 rmt@rmt.cz lubomir.kolar@rmt.cz www.rmt.cz</p>	<p>PORTUGAL</p> <p>UltraSens Qt. da Portela, Lt. 22.1, Ap. 152 3030 - 502 Coimbra, Portugal Phone +351 239 796 277 Fax: +351 239 918 267 info@ultrasens.com www.ultrasens.com</p>	<p>RUSSIA</p> <p>Sensorika-M LLC Dmitrovskoye shosse 64-4 127474, Moscow, Russia Tel: 487-0363 Fax: 487-7460 info@sensorika.com www.sensorika.com</p>
<p>RUSSIA</p> <p>Intellect-Optic Ekaterinburg Mira str 32 – 120 Tel/fax: 343 2227565 Tel/fax: 343 2227370 pesterev@d-test.ru www.d-test.ru</p>	<p>SERBIA, SLOVAKIA</p> <p>RMT Ltd. Zahradni 224 739 21 Paskov, Czech Republic Tel: +420 558640211 Fax: +420 558640218 rmt@rmt.cz lubomir.kolar@rmt.cz www.rmt.cz</p>	<p>SOUTH KOREA</p> <p>PROSEN. CO., LTD 211/ Jung-woo Venture 2, 1228-1 Singil-dong, Danwon-gu, Ansan-si, Gyeonggi-do, 425-839 Republic of Korea Tel: +82-(0)31-508-3456~7 Fax: +82-(0)31-624-3458 prosensor@naver.com www.prosen.kr</p>
<p>SOUTH KOREA</p> <p>DAESHIN T&S CO., LTD 1702 Ace High-End Tower 5 Gasandong, Geumcheon-Gu Seoul, Korea Tel: +82-2-2279-8800 Fax: +82-2-2277-6667 railstar1983@korea.com www.railstar.co.kr</p>	<p>SPAIN</p> <p>Iberfluid Instruments S.A. Cardenal Reig, 12 08028 Barcelona, Spain Tel: +34 93 447 10 65 Fax: +34 93 334 05 24 myct@iberfluid.com www.iberfluid.com</p>	<p>SWEDEN, NORWAY, DENMARK</p> <p>BLConsult Rävbergsvägen 31 SE 713 30, Nora, Sweden Tel: +46 (0) 587 153 20 Mobile: +46 (0) 70 663 19 25 info@blconsult.se www.blconsult.se</p>
<p>SWITZERLAND</p> <p>ID&T GmbH Gewerbstrasse 12/a 8132 Egg (Zurich), Switzerland Tel: +41 (0)44 994 92 32 Fax: +41 (0)44 994 92 34 info@idtlaser.com www.idtlaser.com</p>	<p>TURKEY</p> <p>MATES A.S. RAILWAY INSTRUMENTS ONLY Gezegen Sok. N: 10 GOP ANKARA, TURKEY Tel: +90 312 447 2192 Fax: +90 312 447 2193 mates@mates.com.tr www.mates.com.tr</p>	<p>UKRAINE</p> <p>KODA Frunze st 22 61002, Harkov, Ukraine Tel/fax: +38 057 714 26 54 mail@koda.com.ua www.koda.com.ua</p>

<p>UNITED KINGDOM, IRELAND</p> <p>Ixthus Instrumentation Ltd The Stables, Williams' Barns Tiffield road, Towcester, Northants Tel: 01327 353437 Fax: 01327 353564 www.ixthus.co.uk info@ixthus.co.uk</p>	<p>USA, CANADA, MEXICO</p> <p>International Electronic Machines Corporation RAILWAY INSTRUMENTS ONLY R 60 Fourth Avenue, Albany, New York, USA Tel: +1 (518) 449-5504 Fax: +1 (518) 449-5567 railway_marketing@iem.net www.iem.net</p>	<p>USA, CANADA, MEXICO</p> <p>Acuity Products of Schmitt Industries, Inc. 2765 NW Nicolai Street Portland, OR, 97210, USA Tel: +1-503-227-7908 sales@acuitylaser.com</p>
---	---	---