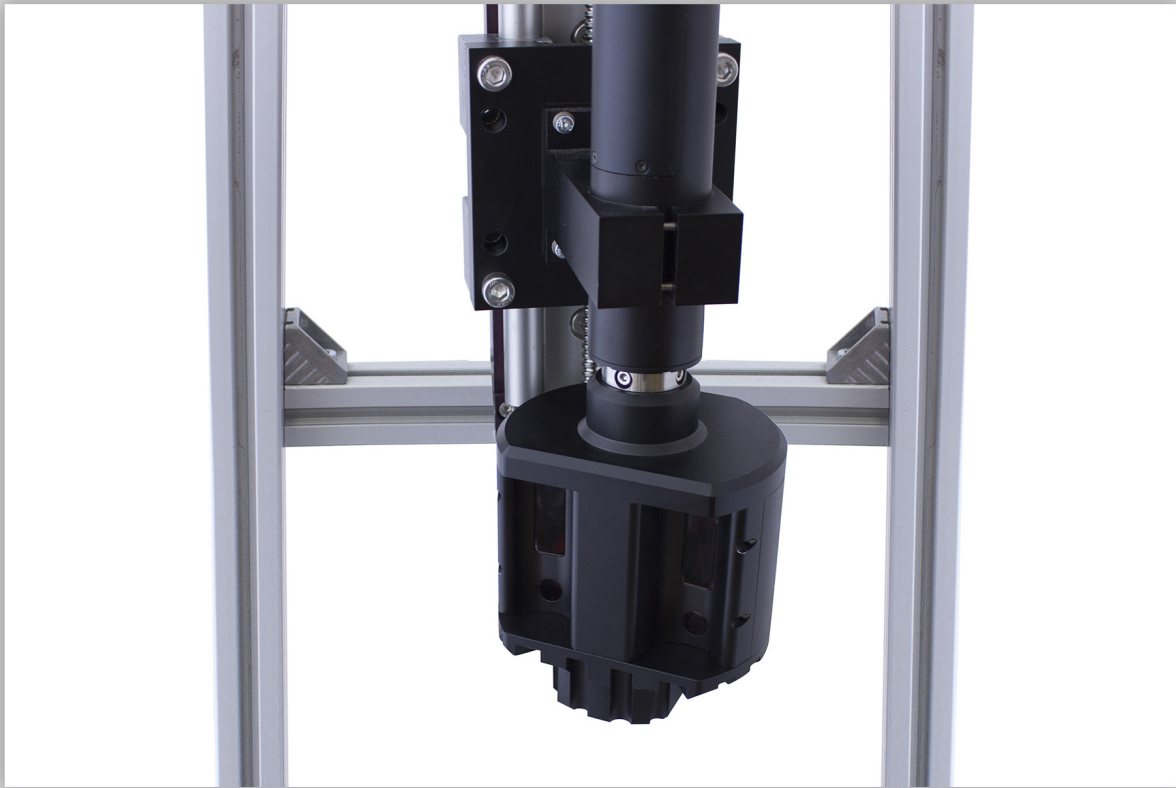




RIFTEK

Sensors & Instruments



RECTANGULAR INNER PROFILE MEASUREMENT SYSTEM

RF096-170x110 Series

User's manual

22, Logoisky tract, Minsk
220090, Republic of Belarus
tel/fax: +375 17 281 36 57
info@riftek.com
www.riftek.com

Contents

1. Safety precautions.....	3
2. CE compliance.....	3
3. Laser safety.....	3
4. General information.....	3
5. Basic technical data.....	4
6. Example of item designation when ordering.....	5
7. Structure and operating principle.....	5
8. Overall demands for mounting.....	5
9. Connection.....	6
9.1. Designation of connector contacts.....	6
9.2. Cable.....	6
10. Network setting.....	7
11. Indended use.....	7
11.1. Preparation for use.....	7
11.1.1. Visual inspection.....	7
11.1.2. Installation and connection.....	7
11.1.3. Adjustment.....	7
11.1.4. Switching on the system.....	7
11.2. Operating the system.....	7
12. Service software.....	8
12.1. General information.....	8
12.2. System requirements.....	8
12.3. SDK library.....	8
12.4. RF096 Test Program.....	8
12.4.1. Connection.....	8
12.4.2. Calibration.....	10
12.4.3. Measurement.....	10
13. Warranty policy.....	10
14. List of changes.....	10
15. Distributors.....	10

1. Safety precautions

- Use supply voltage and interfaces indicated in the system specifications.
- In connection/disconnection of cables, the system power must be switched off.
- Do not use the system in locations close to powerful light sources.
- The system must be grounded.

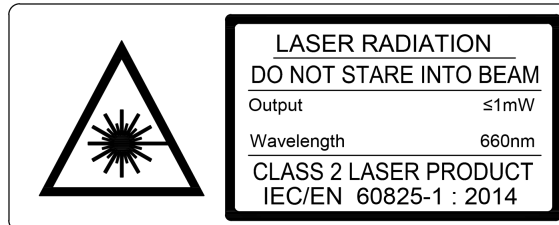
2. CE compliance

The system has been developed for use in industry and meets the requirements of the following Directives:

- EU directive 2014/30/EU. Electromagnetic compatibility (EMC).
- EU directive 2011/65/EU, “RoHS” category 9.

3. Laser safety

The system makes use of a c.w. 660 nm wavelength semiconductor laser. The maximum output power is 1 mW. The system belongs to the 2 laser safety class according to IEC/EN 60825-1:2014. The following warning label is placed on the housing:



The following safety measures should be taken while operating the system:

- Do not target laser beam to humans.
- Do not disassemble the laser sensor.
- Avoid staring into the laser beam.

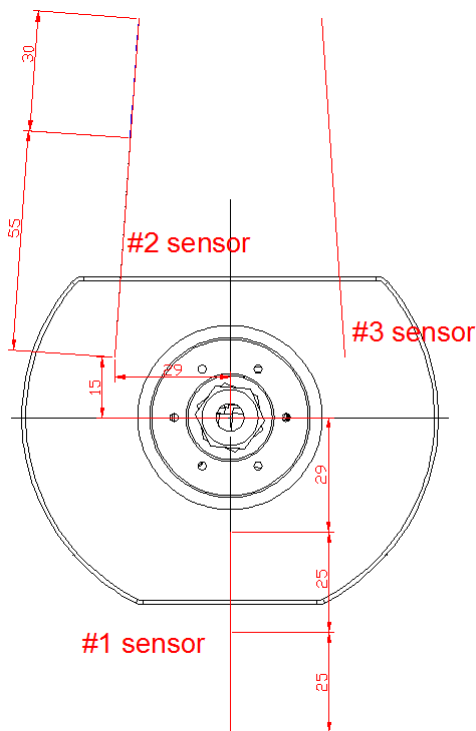
4. General information

The system is intended for non-contact scanning and inner dimensions measurement of objects having special profile.

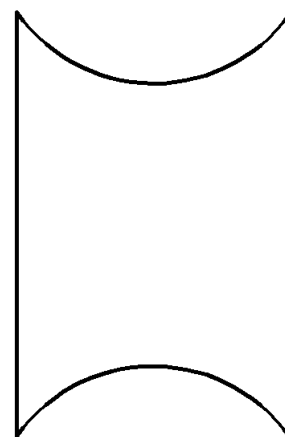
5. Basic technical data

Parameter		Value
Base distance/measurement range (#1 sensor), mm		25/25
Base distance/measurement range (#2 sensor), mm		55/30
Base distance/measurement range (#3 sensor), mm		55/30
Profile measurement accuracy, mm		±0.02
Space resolution, points/turnover		3200
Light source		red semiconductor laser, 660 nm wavelength
Laser output power, mW		<1
Laser safety class		2 (IEC60825-1)
Laser beam shape		Round
Output interface		Ethernet (UDP)
Power supply, V		9...24
Power consumption, W		5 (standby mode), 12 (scan mode)
Environmental resistance	Vibration	20 g / 10...1000 Hz, 6 hours for each of XYZ axes
	Shock	30 g / 6 ms
	Permissible ambient light, lx	30000
	Relative humidity, %	5-95 (no condensation)
	Operating ambient temperature, °C	0...+45
	Storage temperature, °C	-20...+70
Housing material		aluminum
Weight (without cable), gram		1500

NOTE. Technical characteristics of the system can be changed for a specific task.



Measurement head



Measured profile

6. Example of item designation when ordering

RF096-LxW

Symbol	Description
L	Profile length, mm
W	Profile width, mm

Example: RF096-170x110 – Rectangular Inner Profile Measurement System, measurement range: Length - 170 mm , Width - 110 mm.

5

7. Structure and operating principle

Operation of the system is based on the scanning of the hole inner surface by rotating triangulation laser sensors.

The system contains the measurement head with three laser sensors inside, Figure 1.

The measurement head is mounted on the rotation module.

Radiation of semiconductor lasers from the sensors is focused onto the object surface. Radiation reflected by the surface is collected by input lens of the sensors. Rotating laser sensors scan the inner surface of the object, and the system transmits polar coordinates of the surface (distance from the rotation axis measured by the sensors and a corresponding angle of rotation) to the PC for calculating the required geometric parameters.

Overall and mounting dimensions of the system are shown in Figure 1.

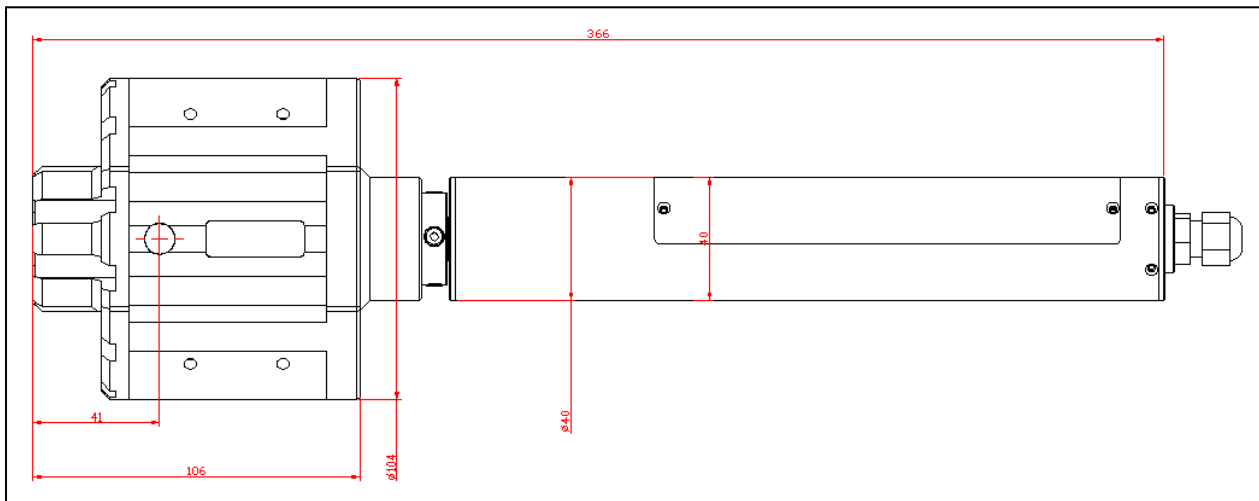


Figure 1. Overall and mounting dimensions of the system

8. Overall demands for mounting

The system is positioned so that the object under control has to be placed within the working range of the system.

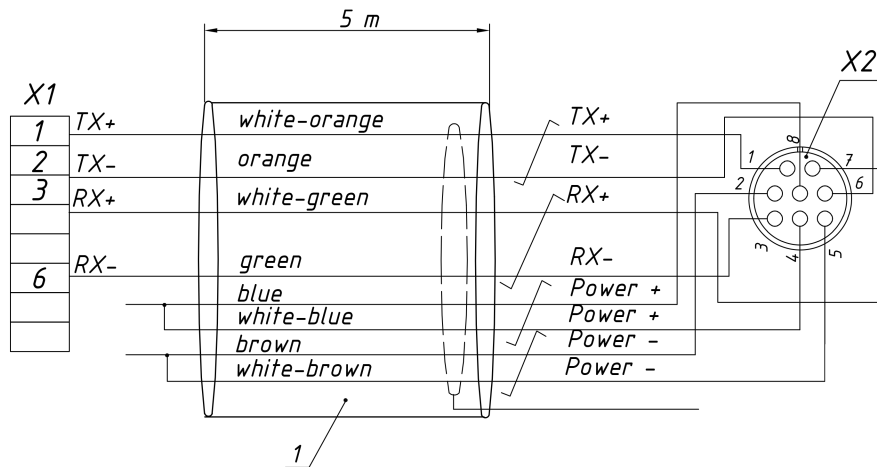


ATTENTION!

The system must be grounded – static electricity may cause the failure of electronic components.

9. Connection

9.1. Designation of connector contacts



Designations:

1	Cable F/UTP CAT 5e
X1	RJ-45
X2	Binder 09 0426 10 08

Assignment:

Pin number	Assignment	Wire color	Note
1	TX+	White-orange	Transmit data Ethernet +
6	TX-	Orange	Transmit data Ethernet -
7	RX+	White-green	Receive data Ethernet +
3	RX-	Green	Receive data Ethernet -
8	Power+	Blue	Power supply: 9...24 V Power consumption: 5 W (standby mode), 12 W (scan mode)
4	Power+	White-blue	
2	Power-	Brown	
5	Power-	White-brown	

9.2. Cable

Designation of cable wires is given in the table below:

Pin number		Assignment #09 0426 10 08	Wire color
RJ-45	1	TX+	White-orange
RJ-45	2	TX-	Orange
RJ-45	3	RX+	White-green
RJ-45	6	RX-	Green
free lead	-	AL (output)	White-blue
free lead	-	Power+	Blue
free lead	-	IN (input)	White-brown
free lead	-	Power-	Brown

10. Network setting

All systems are shipped with the following default network configuration: IP address of the system – 192.168.0.3.

Configure the network card of your PC in the following address space: 192.168.0.X. Connect the system directly to PC or through the network switch.

11. Intended use

11.1. Preparation for use

Preparation of the system includes:

- Visual inspection.
- Installation and connection.
- Adjustment.
- Switching on the system.

11.1.1. Visual inspection

Before operating, it is needed to ensure of the serviceability of the equipment:

- Check the system for completeness and absence of damage.
- Check the cable and ground wire.
- Check the condition of output windows and, if necessary, wipe them with a soft cloth.

11.1.2. Installation and connection

- Install the system onto a linear translation mechanism (or onto the industrial robot).
- Make the electrical connections in accordance with the cable wires designation.

11.1.3. Adjustment

The system is positioned so that the object under control has to be placed within the working range of the system and on the laser beam axis.

11.1.4. Switching on the system

Feed power to the system – 9...24 V.

11.2. Operating the system

The measurement process is fully automated and operation of the system is reduced to the work with the software.

12. Service software

12.1. General information

The service software is intended for:

- Testing and demonstration of the work of the system.
- Setting parameters.
- Calibration.

The service software includes:

- SDK library.
- RF096 Test Program.

12.2. System requirements

- Operating system Windows 7 and later.
- Microsoft Visual C++ Runtime Redistributable for Windows 64-bit. Shipped with the package (you need to run **vcredist_x64.exe**).

12.3. SDK library

SDK contents:

File	Description
rf096021.dll	Dynamic link library.
rf096021.h	C header file. Refer to this file to understand the SDK functions. There is the detailed description for each of them.
rf096021.lib	LIB file to link DLL to the project.

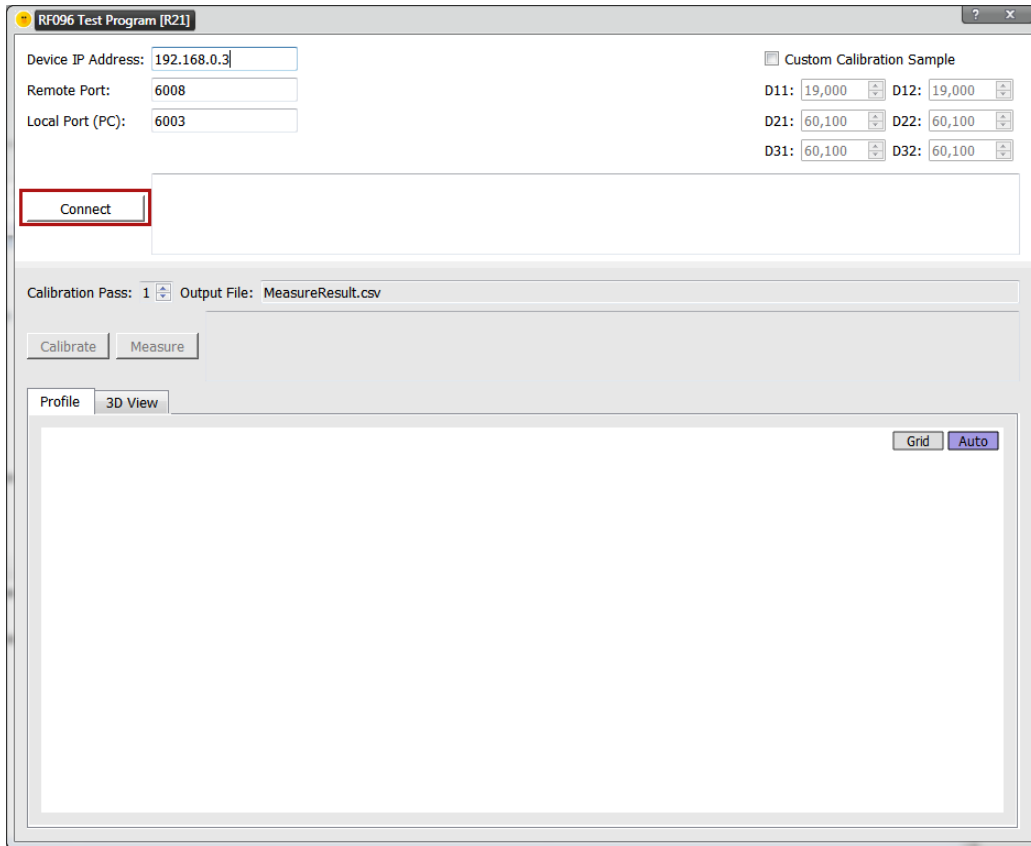
SDK usage scenario:

Step	Description
1	Call <i>rf096021_init()</i> on program start.
2	Call <i>rf096021_connect()</i> to connect to the device. Returns true on success, false on failure.
3	Call <i>rf096021_calibrate()</i> to run the calibration process. Returns true on success, false on failure.
4	Call <i>rf096021_measure()</i> to run the measurement process. Returns true on success, false on failure.
5	Call <i>rf096021_disconnect()</i> to disconnect from the device.
6	Call <i>rf096021_deinit()</i> before your program ends to cleanup the memory allocated by the library.

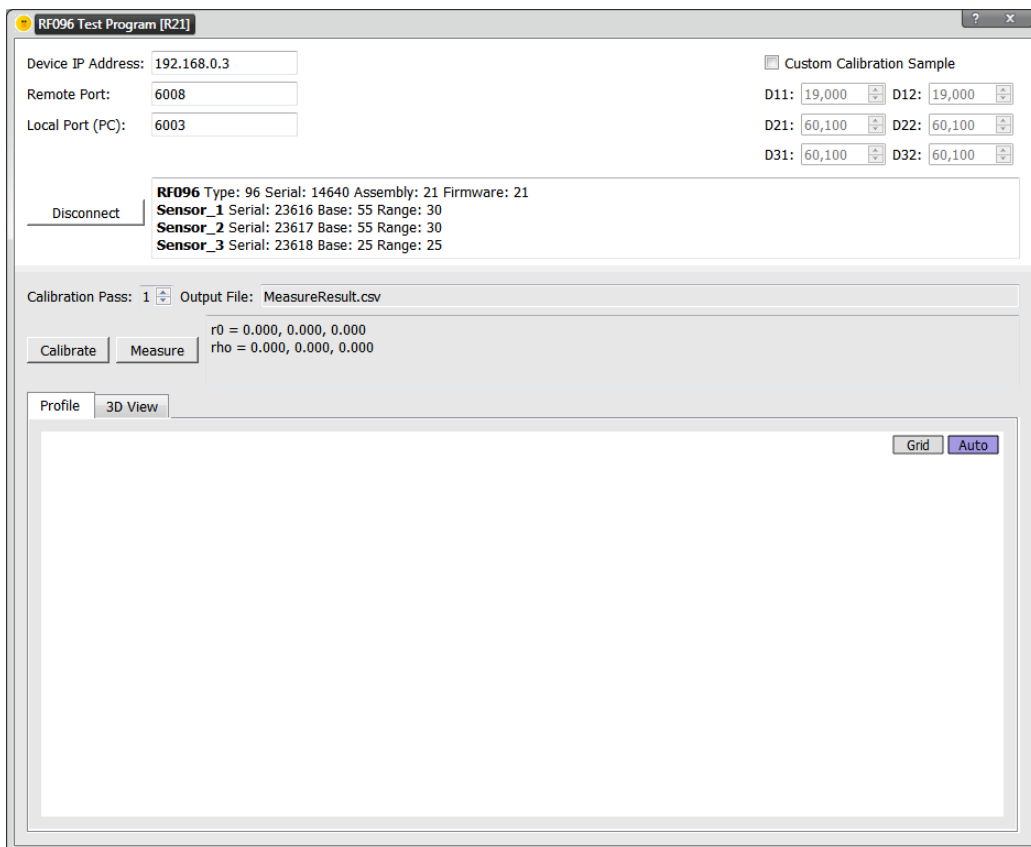
12.4. RF096 Test Program

12.4.1. Connection

When you run the program, parameters fields (**Device IP Address**, **Remote Port**, **Local Port**) are populated with factory defaults. If you didn't change the system parameters, you can click the **Connect** button in order to connect to the system. Otherwise, change factory defaults to the actual system parameters and then click **Connect**.



When the connection is established, the system information will be displayed:



To disconnect from the system, click **Disconnect**.

12.4.2. Calibration



ATTENTION!

1. It is imperative to perform the calibration procedure before the first use.
2. While using the system, you can repeat the calibration procedure in case of obtaining incorrect results.

The calibration must be performed by using the calibration block supplied with the system.

The calibration procedure:

Step	Description
1	Install the calibration block: the bottom side is the side with the axes designation, the axes designation must be to the left.
2	Install the system inside the calibration block so that a laser beam of sensor #1 was in the center of the left semicircle.
3	Click the Calibrate button and wait until the calibration is complete.

10

12.4.3. Measurement

When you have calibrated the system, it's ready to run the measurement.

Click the **Measure** button in order to start the measurement process.

The program will display the calculated values.

You may turn on and off a scale grid by clicking the **Grid** button.

You may zoom and move the image when the **Auto** button is unpressed (shown in gray). To zoom the image, use the mouse wheel. To move the image, press the left mouse key and move the cursor.

13. Warranty policy

Warranty assurance for the Rectangular Inner Profile Measurement System RF096-170x110 Series - 24 months from the date of putting in operation; warranty shelf-life - 12 months.

14. List of changes

Date	Version	Description
24.04.2018	1.0.0	Starting document.

15. Distributors

AUSTRIA

MBM Industry & Rail Tech GmbH

RAILWAY INSTRUMENTS ONLY

Tullnerbachstraße 36,
A-3002 Purkersdorf, Austria
Tel: +43 2231 66000
Fax: +43 2231 66000 12
office@mbm-industrietechnik.at
www.mbm-tech.at

AUSTRALIA

Applied Measurement Australia Pty Ltd

RAILWAY INSTRUMENTS ONLY

Thornton Plaza, Unit 5,
27 Thornton Crescent, Mitcham
VIC 3132, Australia
Tel: +61 39874 5777
Fax: +61 39874 5888
sales@appliedmeasurement.com.au
www.appliedmeasurement.com.au

BENELUX

Altheris B.V.

Vietweg 17a
2266KA Leidschendam
The Netherlands
Tel: +31 70 3924421
Fax: +31 70 3644249
sales@altheris.nl
www.altheris.com

BULGARIA, HUNGARY**RMT Ltd.**

R Zahradni 224
739 21 Paskov, Czech Republic
Tel: +420 558640211
Fax: +420 558640218
emt@rmt.cz
www.rmt.cz

BRAZIL

CAPI Controle e Automação Ltda
Rua Itororó, 121, CEP 13466-240
Americana-SP, Brazil
Tel: +55 19 36047068
Fax: +55 19 34681791
capi@capicontrol.com.br
www.capicontrol.com.br

CHILE

Verne SpA
Apoquindo 2818, oficina 31,
Las Condes, Santiago, Chile
Tel: +56 2 228858633
info@verne.cl
jsaavedra@verne.cl
www.verne.cl

CHINA**Zhenshangyou Technologies Co.,Ltd.**

Rm 2205-2210, Zhongyou Hotel
1110 Nanshan Road, Nanshan
District 518054 Shenzhen, China
Tel: +86 755-26528100/8011/8012
Fax: +86 755-26528210/26435640
info@51sensors.com
www.51sensors.com

CHINA**Shanghai micron-metrology com., Ltd.**

Room 602 unit 4, lane 399,
Mudan road, Pudong New district
Shanghai, China
Tel: +86-21-68416510
sales@micron-metrology.cn
www.micron-metrology.cn

CHINA**JRKtech Co., Ltd.**

1F, Building 9, 100 Xianlie Rd.,
Guangzhou, China
Tel: +86 755 85267190/
+86 15989362481
Fax: + 86 755 85267190
shengz_k@163.com
www.jrktech.com

CZECH REPUBLIC**RMT Ltd.**

Zahradni 224
739 21 Paskov, Czech Republic
Tel: +420 558640211
Fax: +420 558640218
emt@rmt.cz
www.rmt.cz

FINLAND**TERÄSPYÖRÄ-STEELWHEEL OY RAILWAY INSTRUMENTS ONLY**

Juvan teollisuuskatu 28
FI-02920 ESPOO, Finland
Tel: +358 400 422 900
Fax: +358 9 2511 5510
steelwheel@steelwheel.fi
www.teraspyora.fi

FRANCE**DB Innovation (ALTHERIS France)**

26, avenue de la Mediterranee
34110 Frontignan France
Tel: +33-467786166
Fax: +33-467740134
dbi@altheris.fr
www.altheris.fr

GERMANY**Disynet GmbH**

Breyeller Str. 2
41379, Brueggen
Tel: +49 2157 8799-0
Fax: +49 2157 8799-22
disynet@sensoren.de
www.sensoren.de

GERMANY**BIP-Industrietechnik GmbH RAILWAY INSTRUMENTS ONLY**

Am Elisabethhof 22,
D-14772 Brandenburg
D-41379 Brueggen, Germany
Tel: +49 (0) 33 81 75 90 0
Fax: +49 (0) 33 81 75 90 11
info@bip-industrie.de
www.bip-industrietechnik.de

GERMANY**Finger GmbH & Co. KG OPTICAL MICROMETERS ONLY**

Sapelloh 172,
31606 Warmsen, Germany
Tel: +49 5767 96020
Fax: +49 5767 93004
finger@finger-kg.de
www.finger-kg.de

GERMANY**Hylewicz CNC-Technik SHTRIKH-2 ONLY**

Siemensstrasse 13-15,
47608 Geldern, Germany
Tel: +49 2831 91021-20
Fax: +49 2831 91021-99
info@cnc-step.de
www.cnc-step.de

INDIA**Pragathi Solutions**

#698, 5th Main, 8th Cross,
HAL 3rd Stage,
New Tippasandra Road,
Bangalore, 560075, India
Tel: +91 80 32973388
Tel/fax: +91 80 25293985
Mobile: +91 9448030426/
+919448492380
sales@pragathisolutions.in
arghya@pragathisolutions.in
www.pragathisolutions.in

INDIA**BPI (India) RAILWAY INSTRUMENTS ONLY**

63,Civil Lines, Near Bhagirathi
Colony, Roorkee, 247667, India
Tel: +91 1332274743
Tel: +91 9319686784
sales@bpi-india.in
www.bpi-india.in

INDONESIA**PT. DHAYA BASWARA
SANIYASA**

Botanic Junction Blok H-9 NO. 7
Mega Kebon Jeruk, Joglo
Jakarta 11640, Indonesia
Tel: + 62 21 29325859
management@ptdbs.co.id

ITALY**FAE s.r.l.**

Via Tertulliano, 41
20137 Milano, Italy
Tel: +39-02-55187133
Fax: +39-02-55187399
fae@fae.it
www.fae.it

NORWAY**Salitec AS**

PB 468,
N-1327 Lysaker
Tel.: +47 23 891015
Fax: +47 92101005
mail@salitec.no
www.salitec.no

PORTUGAL**UltraSens**

Qt. da Portela, Lt. 22.1, Ap. 152
3030 - 502 Coimbra, Portugal
Phone +351 239 796 277
Fax: +351 239 918 267
info@ultrasens.com
www.ultrasens.com

SERBIA, SLOVAKIA**RMT Ltd.**

Zahradni 224
739 21 Paskov, Czech Republic
Tel: +420 558640211
Fax: +420 558640218
rmt@rmt.cz
www.rmt.cz

IRAN**Novin Industrial
Development Grp.**

Tel: +98 21 44022093-6
Fax: +98 21 43858794
Mobile: +98 9123207518
info@novinid.com
www.novinid.com

LATVIA, ESTONIA**SIA "SOLARTEX"**

RAILWAY INSTRUMENTS ONLY
Duntes 15a, 5th floor, office B7
Riga, Latvia
Tel.: +371 67 130 787
solartex@inbox.lv

PERU**Verne Perú S.A.C.**

Las Codornices 104,
Surquillo, Lima, Peru
Tel/fax: +51 992436734
info@verne.cl
www.verne.cl

RUSSIA**Sensorika-M LLC**

Dmitrovskoye shosse 64-4
127474, Moscow, Russia
Tel: +7 499 487 0363
Fax: +7 499 487 7460
info@sensorika.com
www.sensorika.com

SOUTH AFRICA**Ratcom Enterprise Pty Ltd**

CSIR BUILDING 35, Office 78
Meiring Naude Road, Brummeria
Pretoria, 0084 South Africa
Tel: + 27 12 841 2032
Fax: + 27 86 225 0650
info@ratcom.co.za
www.ratcom.co.za

ISRAEL**Nisso Dekalo Import
Export LTD**

1 David Hamelech Street
Herzia 46661 Israel
Tel: +972-99577888
Fax: +972-99568860
eli@fly-supply.net
www.fly-supply.net
www.aircraft-partsupply.com

MALAYSIA**OptoCom InstruVentures**

H-49-2, Jalan 5, Cosmoplex
Industrial Park, Bandar Baru
Salak Tinggi, Sepang, Malaysia
Tel: 603 8706 6806
Fax: 603 8706 6809
optocom@tm.net.my
www.optocom.com.my

POLAND**MTL ASCO Sp. z o.o.**

RAILWAY INSTRUMENTS ONLY
ul. Wielowiejska 53 44-120
PYSKOWICE (k/ GLIWIC),
Poland
Tel: + 48 32 230 45 70
Fax: + 48 32 332 70 14
rail@ascorail.eu
www.ascorail.eu

RUSSIA**Diesel-test-Komplekt LLC**

620030, Karjennaya St, 16
Ekaterinburg, Russia
Tel/fax: +7 343 2227565
Tel/fax: +7 343 2227370
mail@d-test.ru
www.d-test.ru

SOUTH KOREA**PROSEN. CO., LTD**

M-1001, Songdo techno park IT
center, 32, Songdogwahak-ro,
Yeonsu-gu, Incheon, 21984,
Republic of Korea
Tel: +82-32-811-3457
Fax: +82-32-232-7458
trade@prosen.co.kr
www.prosen.co.kr

SPAIN

Iberfluid Instruments S.A.
C/ Botanica, 122
08908 L'Hospitalet de Llobregat,
Barcelona
Tel: +34 93 447 10 65
Fax: +34 93 334 05 24
myct@iberfluid.com
www.iberfluid.com

THAILAND

Advantech Solution Co.,Ltd.
20/170 Motorway Rd.,
Kwang Pravet, Khet Pravet,
Bangkok, Thailand 10250
Tel: +662-1848705
Fax: +662-1848708
sales@advantechsolution.com
www.advantechsolution.com

**UNITED KINGDOM,
IRELAND**

Ixthus Instrumentation Ltd
The Stables, Williams' Barns
Tiffield road, Towcester, Northants
Tel: +44 1327 353437
Fax: +44 1327 353564
info@ixthus.co.uk
www.ixthus.co.uk

SWITZERLAND

ID&T GmbH
Gewerbestrasse 12/a
8132 Egg (Zurich), Switzerland
Tel: + 41 44 994 92 32
Fax: + 41 44 994 92 34
info@idtlaser.com
www.idtlaser.com

TURKEY

TEKMA Mühendislik A.S.
Cevizli Mh. M. Kemal Cd.,
Hukukçular Towers,
A-Blok, No: 66-A/39
Kartal – Istanbul
Tel: +90 216 970 1318
Tel: +90 850 840 2334
info@tekma.eu
www.tekma.eu

USA, CANADA, MEXICO

**International Electronic
Machines Corporation**
RAILWAY INSTRUMENTS ONLY
850 River Street, Troy,
New York, USA
Tel: +1 518 268-1636
Fax: +1 518 268-1639
marketing@iem.net
www.iem.net

SWEDEN, DENMARK

BLConsult
Ryssbält 294,
95 291 KALIX, Sweden
Mobile: +46 70 663 19 25
info@blconsult.se
www.blconsult.se

UKRAINE

KODA
Frunze st 22
61002, Harkov, Ukraine
Tel/fax: +38 057 714 26 54
mail@koda.com.ua
www.koda.com.ua

USA, CANADA, MEXICO

**Acuity Products of Schmitt
Industries, Inc.**
2765 NW Nicolai Street
Portland, OR, 97210, USA
Tel: +1 503 227 7908
Fax: +1 503 223 1258
sales@acuitylaser.com
www.acuitylaser.com